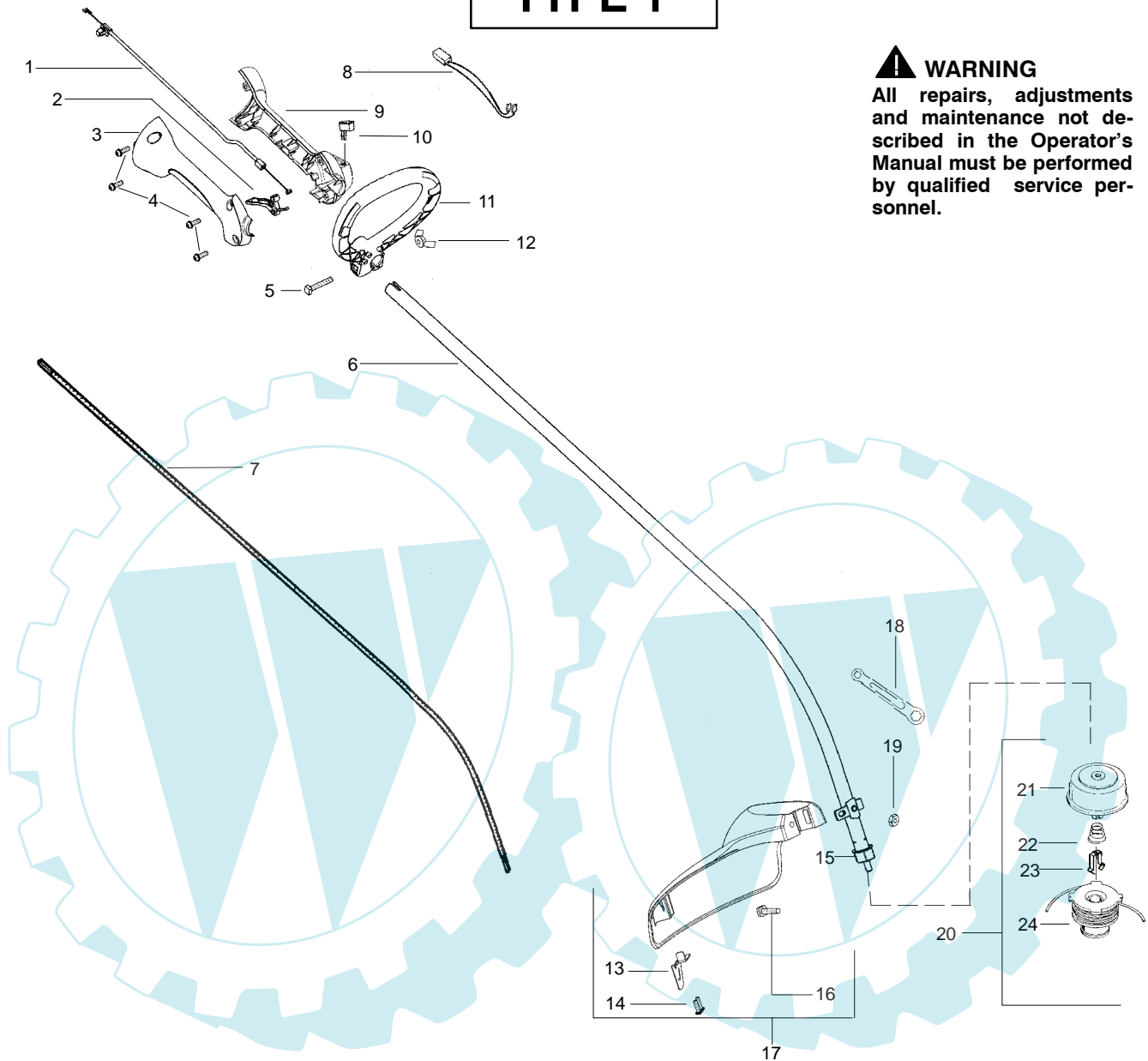


PARTS LIST NO. 530165568		 <b>PARTS LIST</b>	MODEL(s) XLT250 & XLT250+
DATE 1/03/07	Replaces 530165568 - 9/26/06		<b>Note:</b> Illustration may differ from actual model due to design changes

**TYPE 1**



**⚠ WARNING**  
All repairs, adjustments and maintenance not described in the Operator's Manual must be performed by qualified service personnel.

Ref.	Part No.	Description	Ref.	Part No.	Description
1.	530057991	Assy - Throttle Cable	18.	530056401	Wrench
2.	530049107	Trigger	19.	530015197	Nut
3.	530057582	Throttle Hsg. (Right)	20.	530095846	Assy - TNG VI Cutting Head (Incl. 21 - 24)
4.	530015880	Screw - Throttle Hsg.	21.	530095776	Assy - Hub
5.	530015821	Bolt - Handle	22.	530053241	Spring - Compression
6.	545041301	Assy - Drive Shaft Hsg.	23.	530401957	Clip - Retainer - Head
7.	530095242	Shaft - Flex	24.	530095845	Assy - Spool w/Line
8.	530054183	Assy - Wire			Not Shown
9.	530059952	Throttle Hsg. (Left)			Operator Manual
10.	530069572	Kit - Switch			Scan
11.	530057587	Handle - Assist			Euro
12.	530016152	Wingnut			Euro III
13.	530052287	Line Limiter			Euro IV
14.	530015966	Screw - Line Limiter			Turkish
15.	530095563	Dust Cup			Decal - Shaft Warning
16.	530015820	Bolt			
17.	530071972	Kit - Shield Assy (Incl. 13,14,16,18,19)			

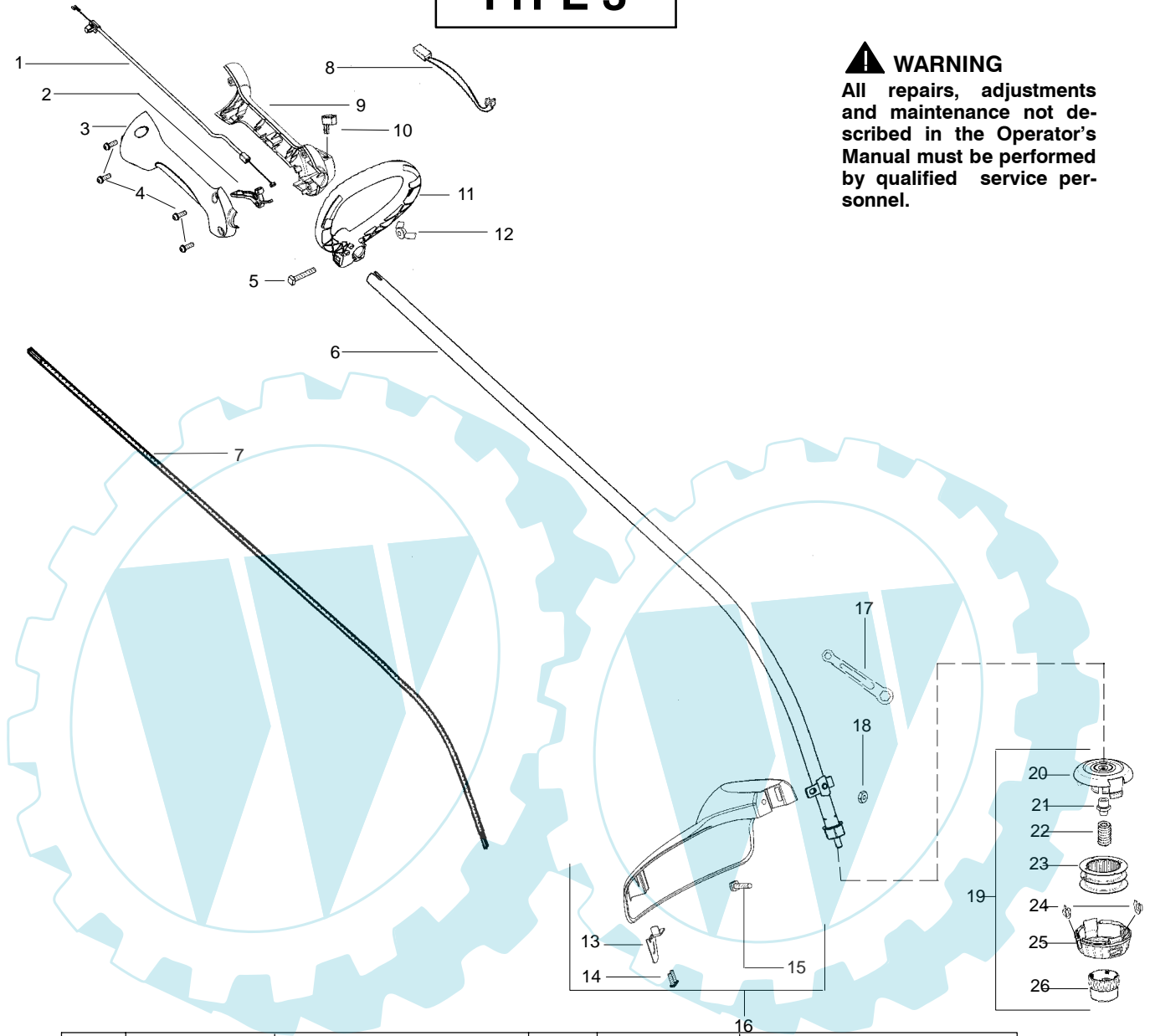
✓ = NEW PART NUMBER FOR THIS IPL    ★ = REFER TO THE SERVICE REFERENCE INDICATED FOR MORE INFORMATION. (LOCATED AT END OF IPL)



PARTS LIST NO. 530165568		 <b>PARTS LIST</b>	MODEL(s) XLT250 & XLT250+
DATE 1/03/07	Replaces 530165568 – 9/26/06		<b>Note:</b> Illustration may differ from actual model due to design changes

# TYPE 3

**⚠ WARNING**  
All repairs, adjustments and maintenance not described in the Operator's Manual must be performed by qualified service personnel.



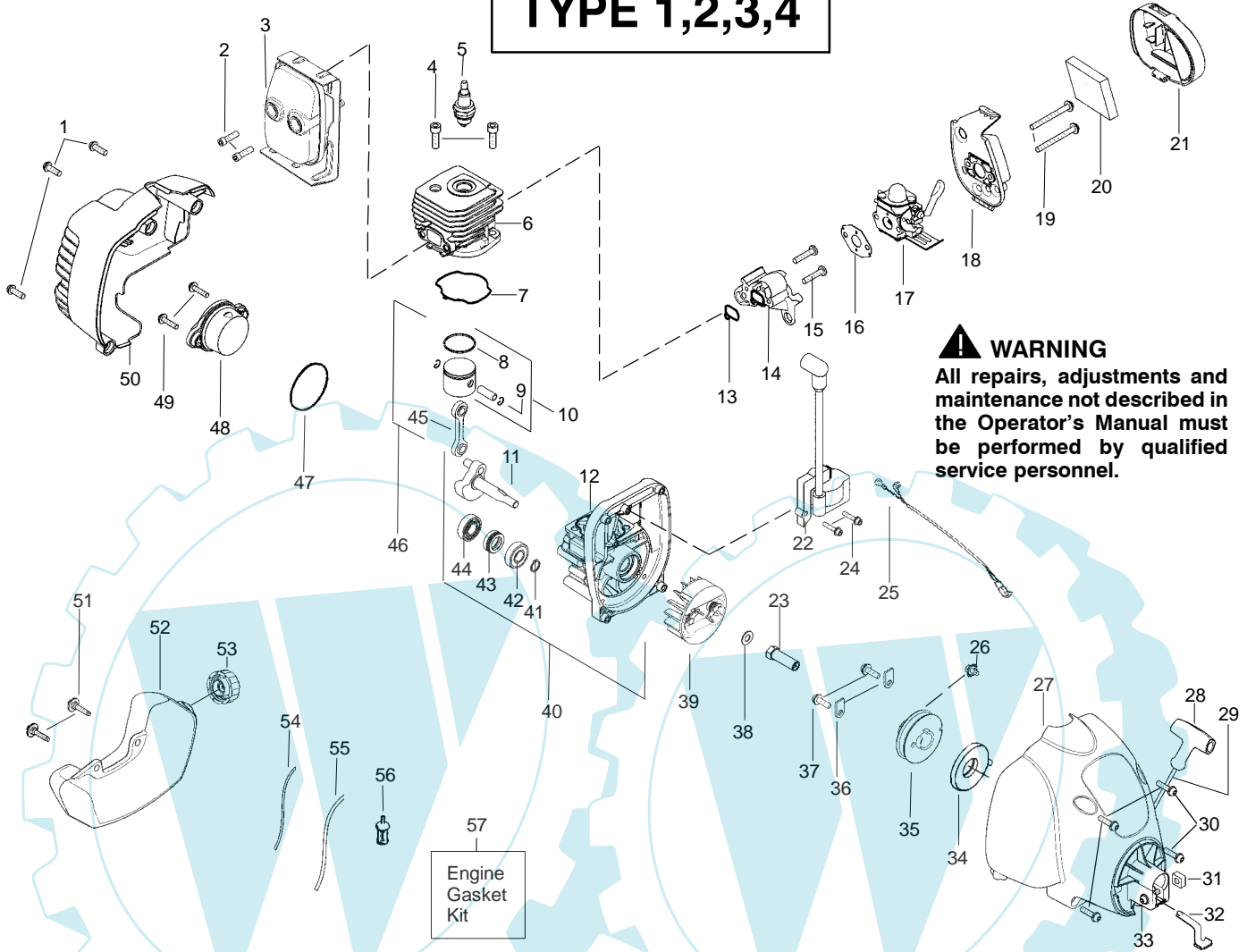
Ref.	Part No.	Description	Ref.	Part No.	Description
1.	530057991	Assy – Throttle Cable	19.	537419205	Assy-Head TNG 7 (.080 RH 5/16") (Incl. 20,21,22,23,24,25,26)
2.	530049107	Trigger	20.	537419303	Housing-gray
3.	530057582	Throttle Hsg. (Right)	21.	537419901	Adapter
4.	530015880	Screw – Throttle Hsg.	22.	537338801	Spring
5.	530015821	Bolt – Handle	23.	545080801	Assy-Spool (.080 rh 5/16")
6.	545024806	Kit – Drive Shaft Hsg.	24.	537419701	Eyelet
7.	530096275	Shaft – Flex	25.	537419401	Cover
8.	530054183	Assy – Wire	26.	537419601	Knob
9.	530059952	Throttle Hsg. (Left)			Not Shown
10.	530069572	Kit – Switch	---	---	Operator Manual
11.	530058580	Assy – Handle (Incl. 5,12)		545058770	Scan
12.	530016152	Wingnut		545058771	Euro
13.	530052286	Line Limiter		545058769	Euro III
14.	530015966	Screw – Line Limiter		545058768	Euro IV
15.	530015820	Bolt		545058767	Turkish
16.	545006023	Kit – Shield Assy (Incl. 13,14,15,17,18)		530150303	Decal – Shaft Warning
17.	530056401	Wrench			
18.	530015197	Nut			

✓ = NEW PART NUMBER FOR THIS IPL    \* = REFER TO THE SERVICE REFERENCE INDICATED FOR MORE INFORMATION. (LOCATED AT END OF IPL)



PARTS LIST NO. 530165568		 <b>PARTS LIST</b>	MODEL(S) XLT250 & XLT250+
DATE 1/03/07	Replaces 530165568 - 9/26/06		<b>Note:</b> Illustration may differ from actual model due to design changes

# TYPE 1,2,3,4



Ref.	Part No.	Description	Ref.	Part No.	Description	Ref.	Part No.	Description
1.	530015880	Screw	20.	530057781	Foam-Air Filter	45.	530069945	Assy-Connecting Rod
2.	530058982	Bolt-Muffler	21.	530057584	Cover-Air Box	46.	530071785	Kit-Piston/Rod Assy
3.	530059826	Assy-Muffler/Shield (Incl. 2)	22.	545024901	Ignition Module			(Incl. 10 & 45)
4.	530015953	Screw-Cylinder	23.	530038604	Coupling-Drive	47.	530071750	O-Ring-C'case (kit)
5.	952030249	Spark Plug (RCJ 6Y)	24.	530016357	Screw	48.	530057954	Assy-Plug (incl.47)
6.	530012541	Cylinder	25.	530049018	Assy-Wire Harness	49.	530016386	Screw
7.	530071750	Seal-Cylinder (kit)	26.	530016392	Screw	50.	545011002	Shroud-Rear
8.	530055120	Piston Ring	27.	545010602	Assy.-Fan Hsg	51.	530016445	Retainer-Tank
9.	530015162	Retainer-Piston Pin	28.	530027569	Handle- Starter	52.	530058712	Assy-Fuel Tank (incl. filter, lines & fuel cap)
10.	530071833	Kit - Piston (Incl. 8, 9)	29.	530071767	Kit - Rope			Assy-Fuel Cap
11.	530057829	Assy-Crankshaft	30.	530016386	Screw	53.	530014347	Kit-Fuel Line (Small)
12.	530012582	Assy-Crankcase (Incl. 42,43,44)	31.	530016124	Nut	54.	530069247	Kit-Fuel Line (Large)
13.	530071750	Seal-Cyl/Carb.(kit)	32.	530057588	Clip-Spring	55.	530069216	Kit-Fuel Line (Large)
14.	530057547	Adapter-Carb.	33.	530016430	Screw	56.	530095646	Assy-Fuel Pickup
15.	530016309	Screw	34.	530042085	Spring-Starter	57.	530071750	Kit-Engine Gasket (Incl. 7,13,16,47)
16.	530071750	Gasket-Carb. (kit)	35.	530071786	Kit-Pulley-Starter			Not Shown
17.	---	Kit-Carb.	36.	530027523	Retainer-Pulley			
	530071822	Zama (C1U-W24)	37.	530015775	Screw			
	545081807	Walbro ( WT-670)	38.	530015828	Washer-Flat			
			39.	545005101	Assy-Flywheel			
			40.	530071768	Assy-C'case/C'shaft (Incl. 11,12,41)			
			41.	530015941	Retain. Ring-C'shaft			530058709
			42.	530055728	Outer Bearing			530058569
			43.	530019264	Seal			530059297
			44.	530032125	Inner Bearing			
(Note: Repair kits are not available for this carburetor)								Bulb-Purge
18.	530059267	Air Box						Choke Lever - Zama
19.	530016429	Screw						Choke Lever - Walbro

✓ = NEW PART NUMBER FOR THIS IPL    \* = REFER TO THE SERVICE REFERENCE INDICATED FOR MORE INFORMATION. (LOCATED AT END OF IPL)

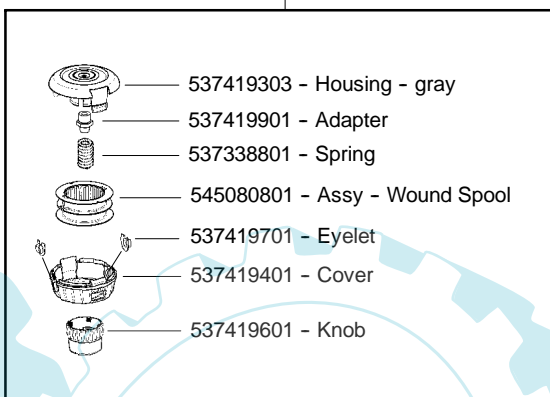
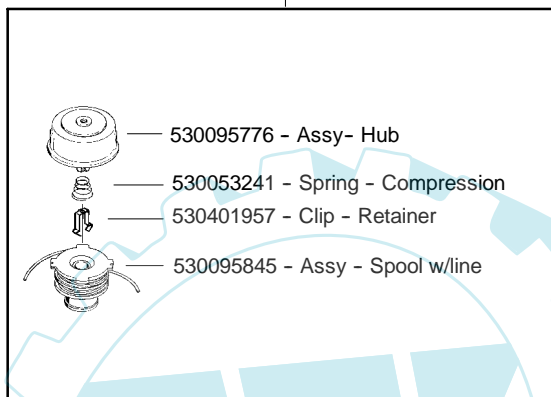
PARTS LIST NO. <b>530165568</b>		 <b>PARTS LIST</b>	MODEL(s) <b>XLT250 &amp; XLT250+</b>
DATE <b>1/03/07</b>	Replaces 530165568 – 9/26/06		<b>Note:</b> Illustration may differ from actual model due to design changes

★★★★ TYPE 4 Service Note: ★★★★★

Some units may have been built with either the TNG VI or TNG VII cutting heads. Please identify the cutting head on your unit and order parts accordingly.

530095846 - Assy - TNG VI Cutting Head

537419205 - Assy - TNG VII Cutting Head



✓ = NEW PART NUMBER FOR THIS IPL      ★ = REFER TO THE SERVICE REFERENCE INDICATED FOR MORE INFORMATION. (LOCATED AT END OF IPL)  
● = THESE PARTS ARE ILLUSTRATED FOR CLARITY. ORDER COMPLETE ASSEMBLY.